
REPUBLIC OF KAZAKHSTAN

Post: Bldg 15, E522 str.,
010014 Astana,
Republic of Kazakhstan

The Republican State
Enterprise
“Kazaeronavigatsia”

AIP SUP: 001/2026
Effective from 17-Apr-2026
to 31-Mar-2028

Phone: +7 (7172) 704282

Published on 17-Apr-2026

AFS: UAAKYNXX

URL: <http://www.ans.kz/>

ALMATY AD (UAAA) - AERODROME CONSTRUCTION PLAN 2026-2028

INTRODUCTION

The purpose of this AIP Supplement is to inform operators of temporary closures of runways, taxiways, and aprons at UAAA - ALMATY / International Airport to facilitate aerodrome construction works during the 2026–2028 period. This document provides a detailed, phase-by-phase description of civil works, operational impacts, runway/taxiway closures, aircraft stand availability, and aircraft taxi routings for the duration of the construction period.

The works are planned in several phases, as indicated below. These work and closure phases are subject to change in order to meet evolving operational and construction requirements.

Note:

The effective dates of specific area closures and more detailed information regarding affected activities will be provided via NOTAM and Safety Bulletins (to airport users) in advance of the closures.

PHASE 1 – Period March 1, 2026 – May 15, 2026

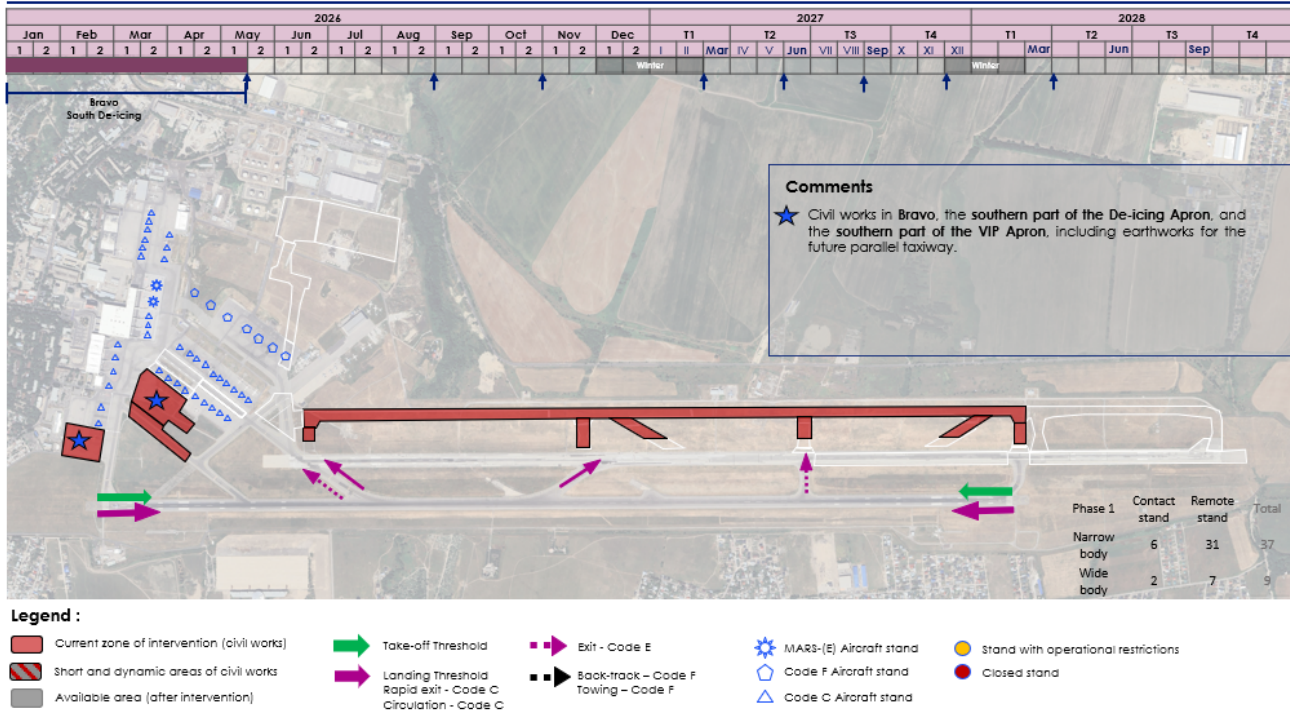
Scope of works

Civil engineering activities shall be undertaken within Aprons 1 and 4 (VIP apron). The scope of works includes interventions on Taxiway Bravo, the southern portion of the Deicing Apron, and the southern section of the VIP Apron.

Concurrently, earthworks operations are being conducted in relation to the future development of Parallel Taxiway November. These activities comprise ground preparation, grading, and associated preparatory works necessary for subsequent infrastructure deployment.

Operational Impact

- Closure of Taxiway Bravo: until 15 May 2026
- Development of South Deicing Apron: until 15 May 2026
- Closure of southern VIP Apron: until 15 May 2026
- Impact on Aircraft Stands:
 - No impact on aircraft stand availability or allocation is anticipated during this phase.



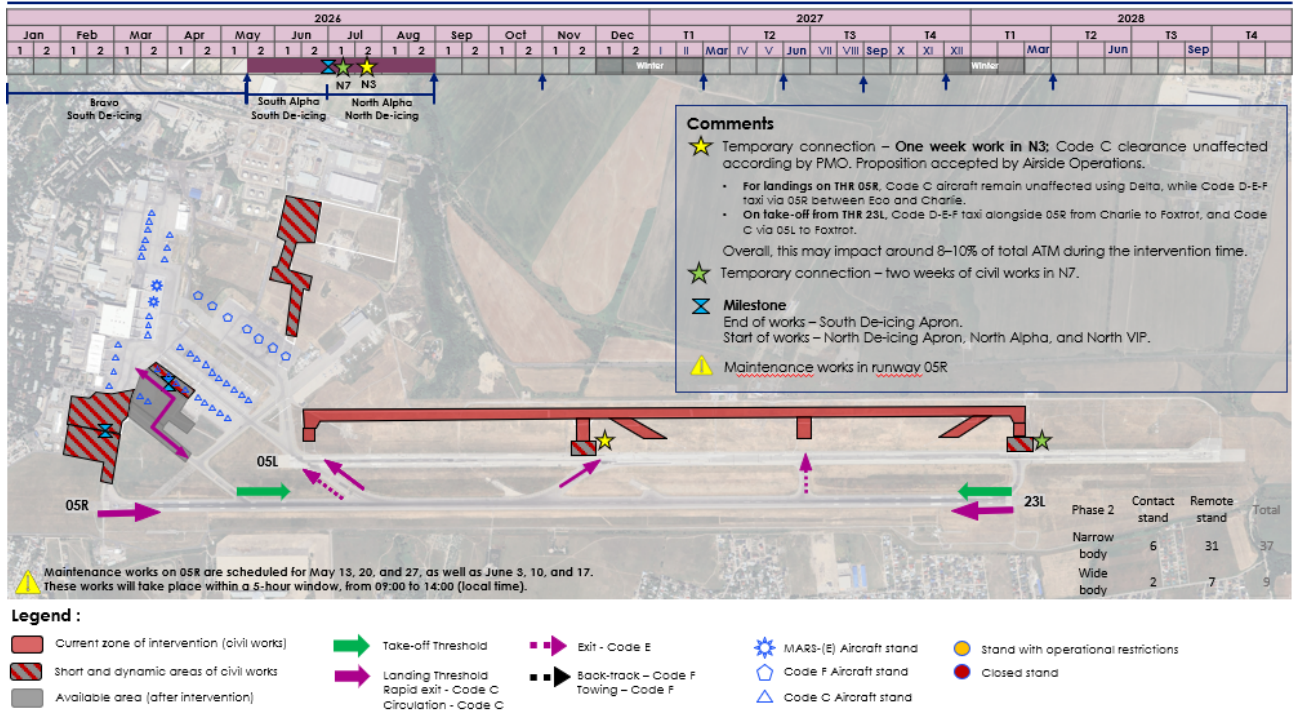
PHASE 2 – Period May 16, 2026 - August 30, 2026

Scope of works

Civil engineering works shall be undertaken within the southern airside area, including interventions on Taxiway Alpha and the northern section of the Deicing Apron. In parallel, major civil works will be carried out on the central section of the future Parallel Taxiway November. Temporary connections N3 and N7, linking Taxiway November to Runway 05L-23R, shall be constructed during this phase. Additionally, civil works related to the development of the future Cargo Apron are scheduled to commence. Routine maintenance works on Runway 05R-23L are also planned, consisting of periodic interventions of approximately five (5) hours duration.

Operational Impact

- 16 May – 30 June 2026: Closure of southern part of Taxiway Alpha 1 and southern VIP Apron
- 01 July – 30 August 2026: Closure of northern part of Taxiway Alpha 1 and northern VIP Apron
- 01 July – 15 July 2026: N7 temporary connection (impact on Code E/F taxiing)
- 16 July – 23 July 2026: N3 temporary connection (degraded taxiing operations for Code E/F aircraft)
- Runway 05R-23L Maintenance:
 - Scheduled closures (09:00–14:00 local time) on: 13 May, 20 May, 27 May, 03 June, 10 June, and 17 June 2026. During these periods all flights except code E and F aircraft will operate on Runway 05L-23R. Flight operations for code E and F aircraft to/from the aerodrome during these windows are restricted.
- Impact on Aircraft Stands:
 - During works on the northern Deicing Apron, four (4) aircraft stands shall be closed (101AB, 102AB).
 - Following completion of works on the southern VIP Apron and southern part of Taxiway Alpha 1 (30 June 2026), three (3) Code C stands and one (1) MARS stand shall be introduced.



PHASE 3 – Period September 1, 2026 – October 31, 2026

Scope of works

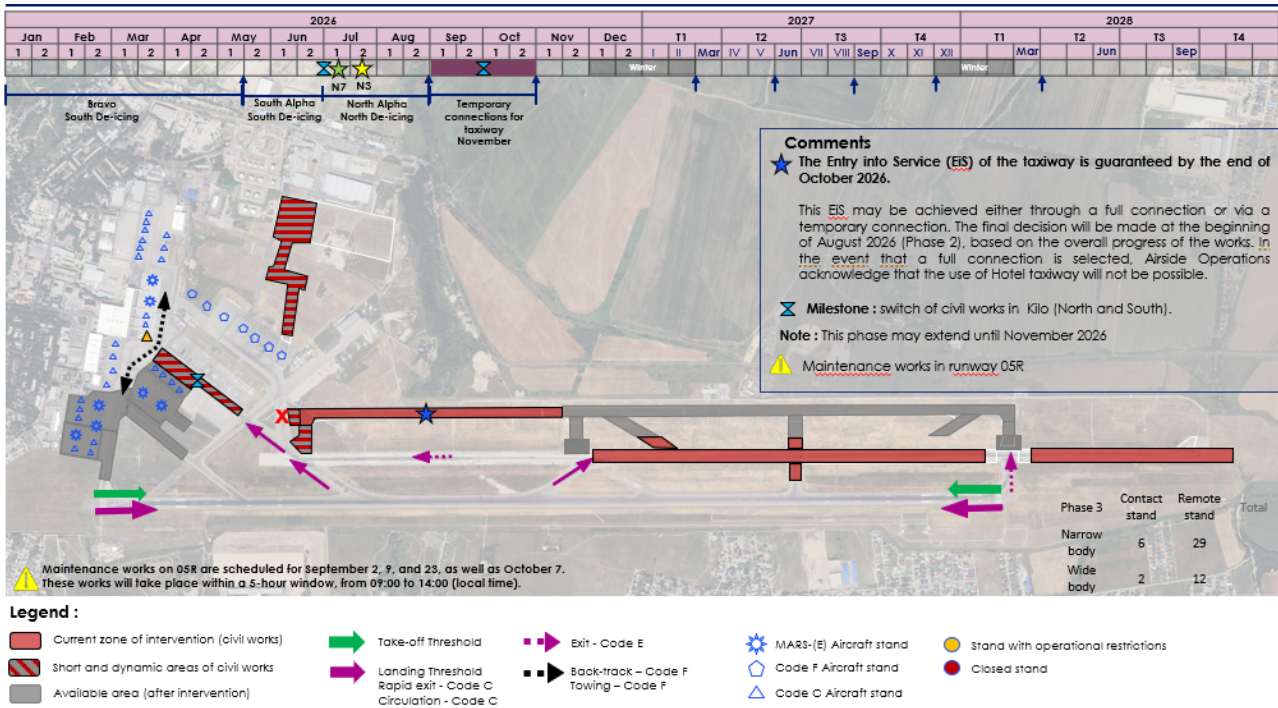
Civil engineering works shall be undertaken on Taxilane Kilo 1, including phased rehabilitation interventions. Simultaneously, demolition works shall commence on Runway 05L-23R between Taxiway Delta and Threshold 23R, while maintaining operational continuity via Taxiway Foxtrot and connection N7. Construction activities shall also include the implementation of temporary connections between Taxiway November and Taxiway Lima, as well as November 2 (N2). Works related to the development of the Cargo Apron shall continue during this phase. In addition, routine maintenance works on Runway 05R-23L are scheduled, consisting of interventions of approximately five (5) hours duration.

Operational Impact

- 01 September – 30 September 2026: Partial closure of western part of Taxilane Kilo 1 and associated stands
- 01 October – 31 October 2026: Partial closure of eastern part of Taxilane Kilo 1 and associated stands
- 01 September – 31 October 2026: Partial closure of Taxiway Lima and connection of N2
- 31 October – 01 April 2028: Demolition and full refurbishment of Runway 05L-23R
- Runway 05R-23L Maintenance Closures:
 - Scheduled closures (09:00–14:00 local time) on: 02 September, 09 September, 23 September, and 07 October 2026. During these periods all flights except code E and F aircraft will operate on Runway 05L-23R. Flight operations for code E and F aircraft to/from the aerodrome during these windows are restricted.
- Impact on Aircraft Stands:
 - 01 September – 30 September 2026: Closure of selected aircraft stands (501, 502, 503, 504) in the western part of Taxilane Kilo 1, with restricted operations on adjacent stands
 - 01 October – 31 October 2026: Closure of additional aircraft stands in the eastern part of

Taxilane Kilo 1 (505, 506, 507, 508, 509, 510), resulting in reduced stand availability.

0.2



PHASE 4 – Period November 1, 2026 – February 28, 2027

Scope of works

Civil engineering works shall continue on the development of the Cargo Apron.

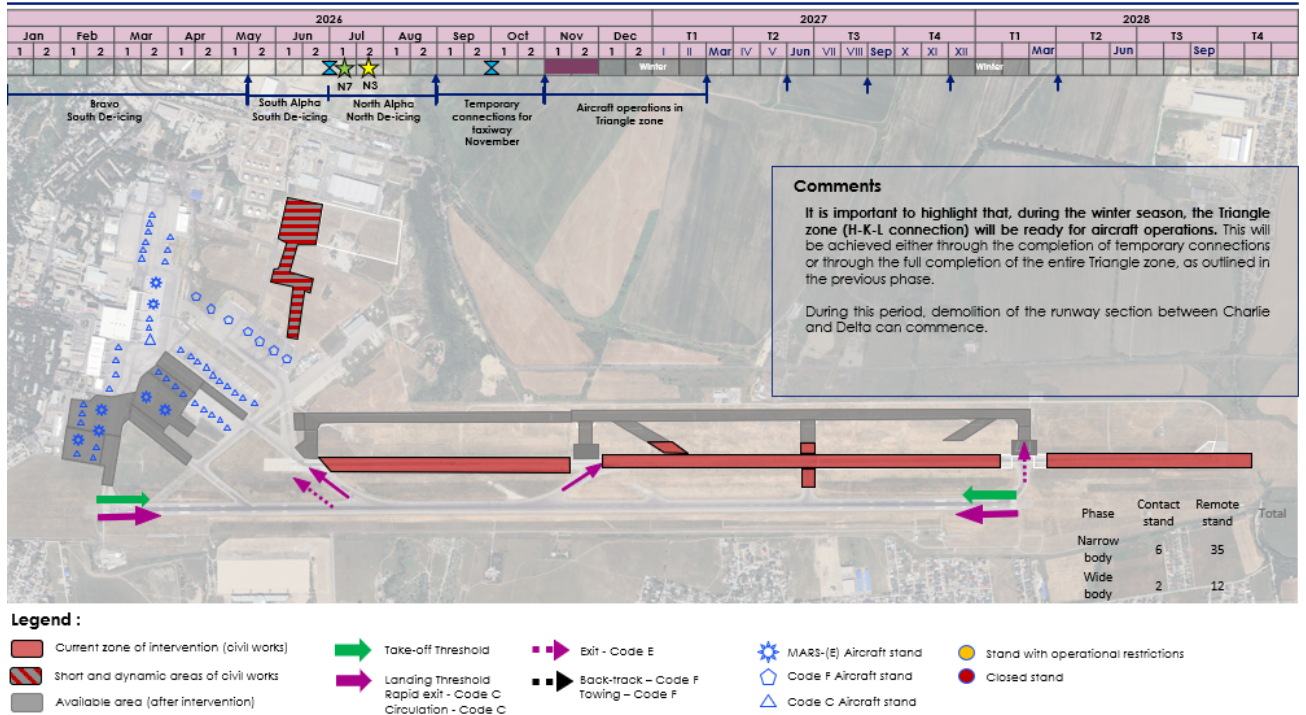
The scope of demolition works on Runway 05L-23R shall be extended to include the section between Taxiway Charlie and Taxiway Delta, in addition to the segments already under demolition between Taxiway Delta and Taxiway Foxtrot, and between Taxiway Foxtrot and Threshold 23R.

Taxiway connections between Runway 05R-23L and Taxiway November shall remain operational throughout this phase.

Routine maintenance works on Runway 05R-23L shall no longer be conducted during this phase.

Operational Impact

- November 1, 2026: Entry into service of Taxiway November
- Impact on Aircraft Stands:
 - No aircraft stands shall be affected during this phase



PHASE 5 – Period March 1, 2027 – May 31, 2027

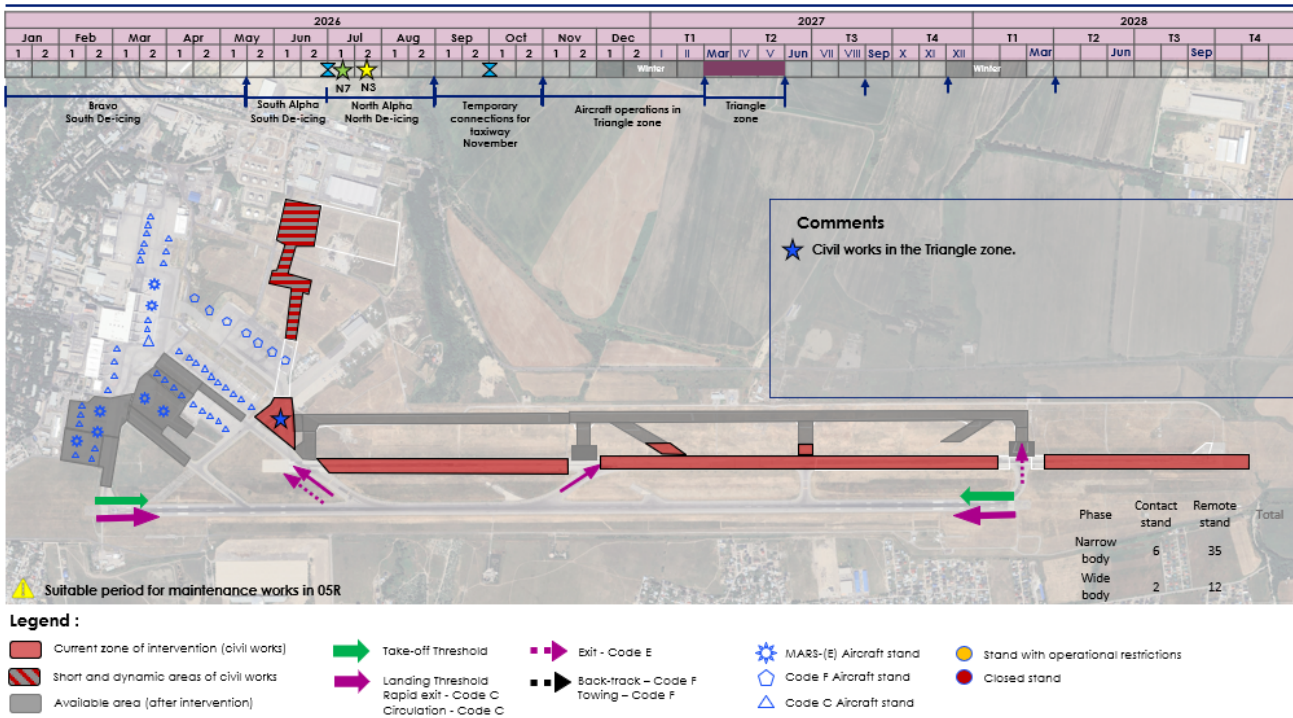
Scope of works

The following construction activities are planned during this phase:

- Triangle Zone Intervention: Direct civil works on Taxiway Hotel (segment between Taxiway Kilo and the military apron interface) and Taxiway Lima (segment between Taxiway Kilo and the military apron interface). Taxiway Kilo will be maintained in an open configuration to ensure continuous aircraft taxiing.
- Cargo Apron Continuity: Ongoing civil works on the new cargo apron area.
- Runway 05L-23R Demolition: Progressive demolition operations will be executed along the following segments:
 - Taxiway Charlie to Taxiway Delta
 - Taxiway Delta to Taxiway Foxtrot
 - Taxiway Foxtrot to Threshold 23R

Operational Impact

- 01 March – 31 May 2027: Taxiways Hotel and Lima closed.
- Code F Aircraft Operational Constraints:
 - Due to limited separation distances on available taxi routes all Code F aircraft will be required to be escorted with follow-me vehicles and reduce taxi speed
- Impact on Aircraft Stands:
 - No aircraft stands are affected, removed from service, or re-configured during the period.



PHASE 6 – Period June 1, 2027 – August 31, 2027

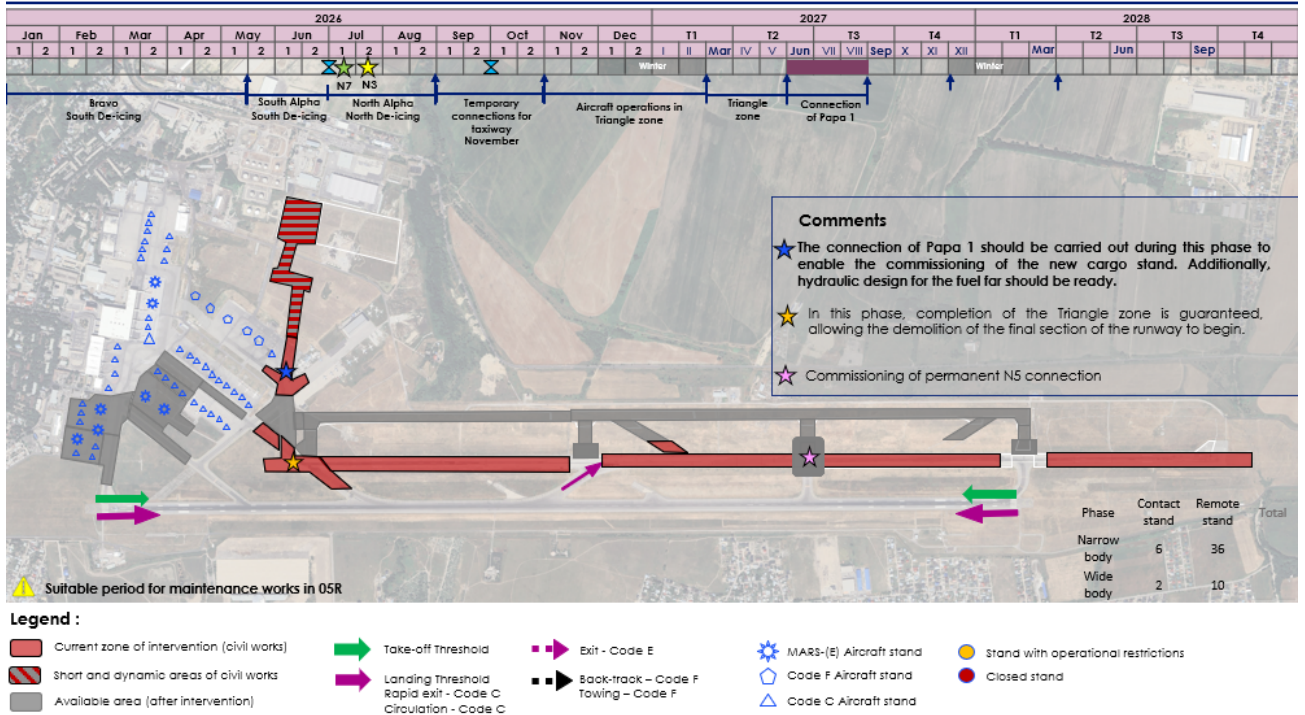
Scope of works

During this phase, civil works are executed on the zones designated as Papa 1 and a segment of Taxiway Lima. Upon completion of works within the Triangle Zone (Phase 5), construction commences on the new Taxiway Papa 1, by establishing connection with Apron 6 and the Triangle Zone. Concurrently, demolition works commence on:

- Taxiway Kilo (the segment between Taxiway Hotel and Runway 05L-23R)
- The final portion of Runway 05L-23R (specifically Threshold 05L and Taxiway Charlie)
- Civil works on Taxiway N5 have been completed and it is put into service.

Operational Impact

- 01 June – 31 August 2027: Connecting of Taxiway Papa 1 to Apron 6
- Impact on Aircraft Stands:
 - The following aircraft stands are closed (removed from service): 606, 607.



PHASE 7 – Period September 1, 2027 – November 30, 2027

Scope of works

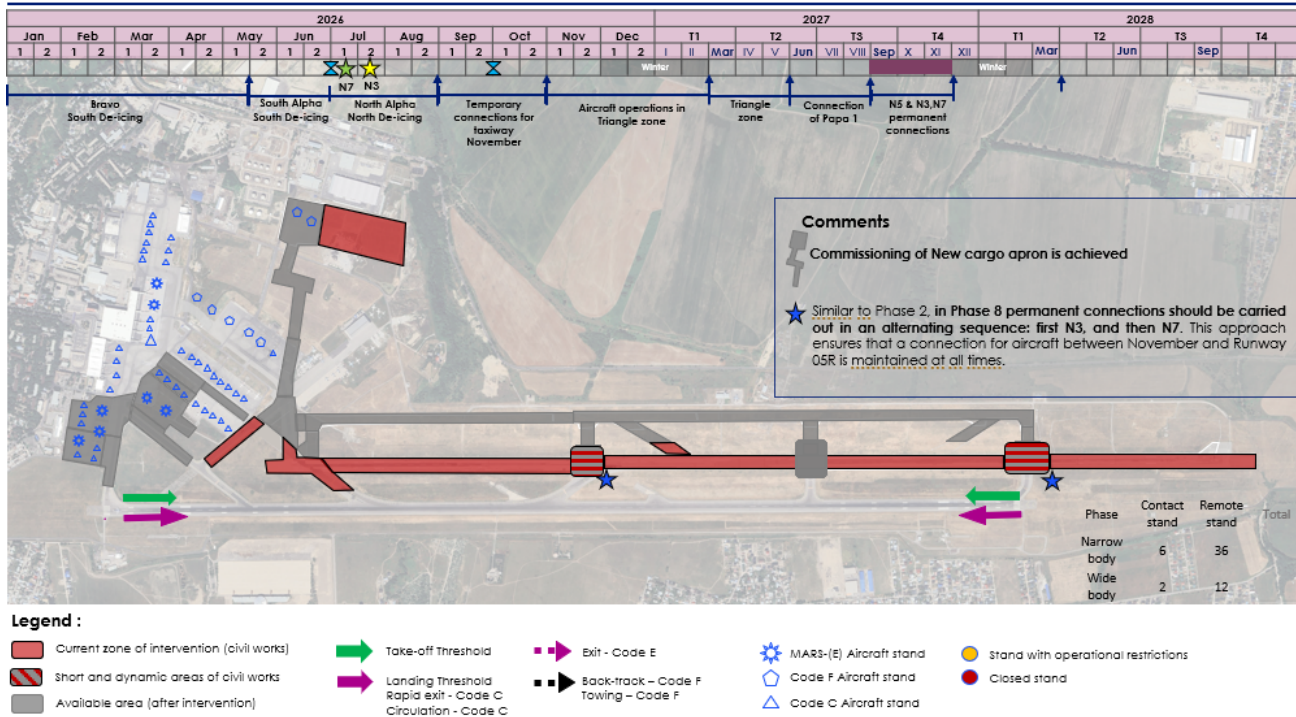
Civil works during this phase concern the permanent connections on N3 and N7. It is important to note that N3 is intervened first, and upon its completion, works on N7 commence.

Additionally, civil works are executed on Taxiway Hotel along the segment between Taxiway Bravo and Taxiway Kilo. This effectively restricts the only access to Taxilane K1 to the entry via taxilanes Alpha 2 and Alpha 3.

Civil works also commence on the eastern part of the new Cargo Apron.

Operational Impact

- 01 September 2027 – 15 October 2027: Taxiing on N3 closed
- 16 October 2027 – 30 November 2027: Taxiing on N7 closed
- 01 September 2027 – 30 November 2027: Taxiway Hotel (segment between Taxiway Bravo and Taxiway Kilo) closed.
- Impact on Aircraft Stands:
 - Stands commissioned: 701 and 702.



PHASE 8 – Period December 1, 2027 – March 31, 2028

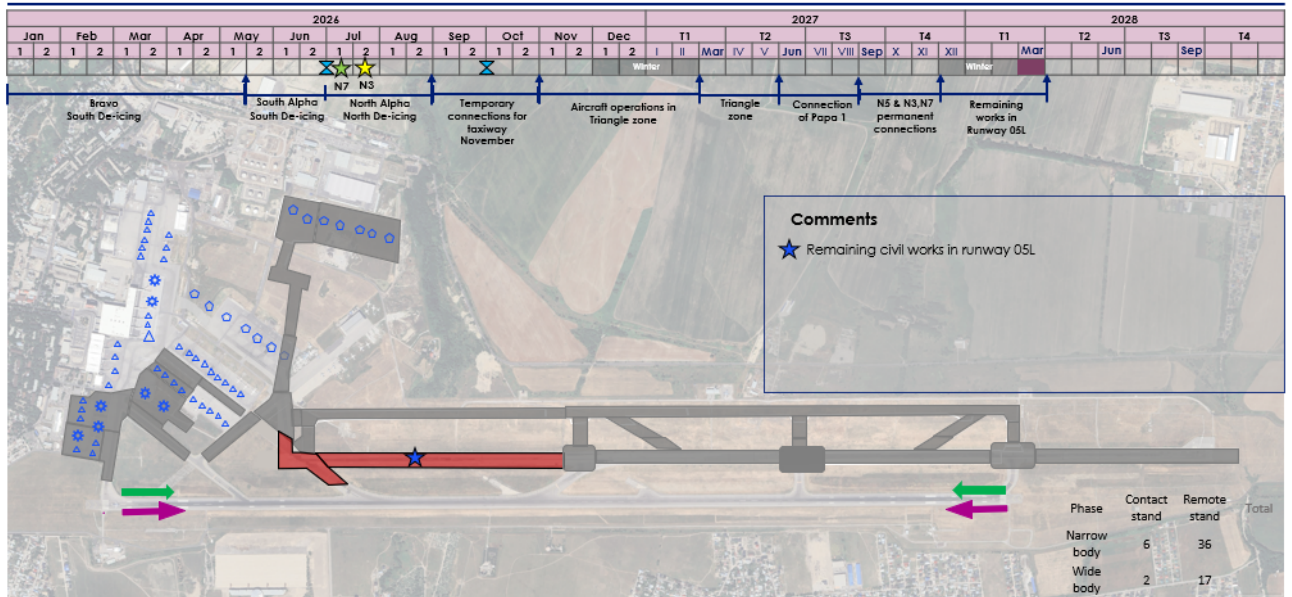
Scope of works

The only civil works in progress during this phase are on the section of Runway 05L-23R located between Delta and Threshold 05R. The remainder of the aerodrome presents no significant civil works

Operational Impact

- 01 December 2027 – 31 March 2028: Taxiing on Taxiway Charlie closed
- 01 April 2028: Runway 05L-23R is put into service
- Impact on Aircraft Stands:
 - During this phase, there is no negative impact on existing aircraft stands. No previously operational stands are closed, modified, or reconfigured. Additionally, as a result of the commissioning of the eastern section of the new Cargo Apron, five (5) new Code F aircraft stands are opened. These stands are: 703, 704, 705, 706, and 707.

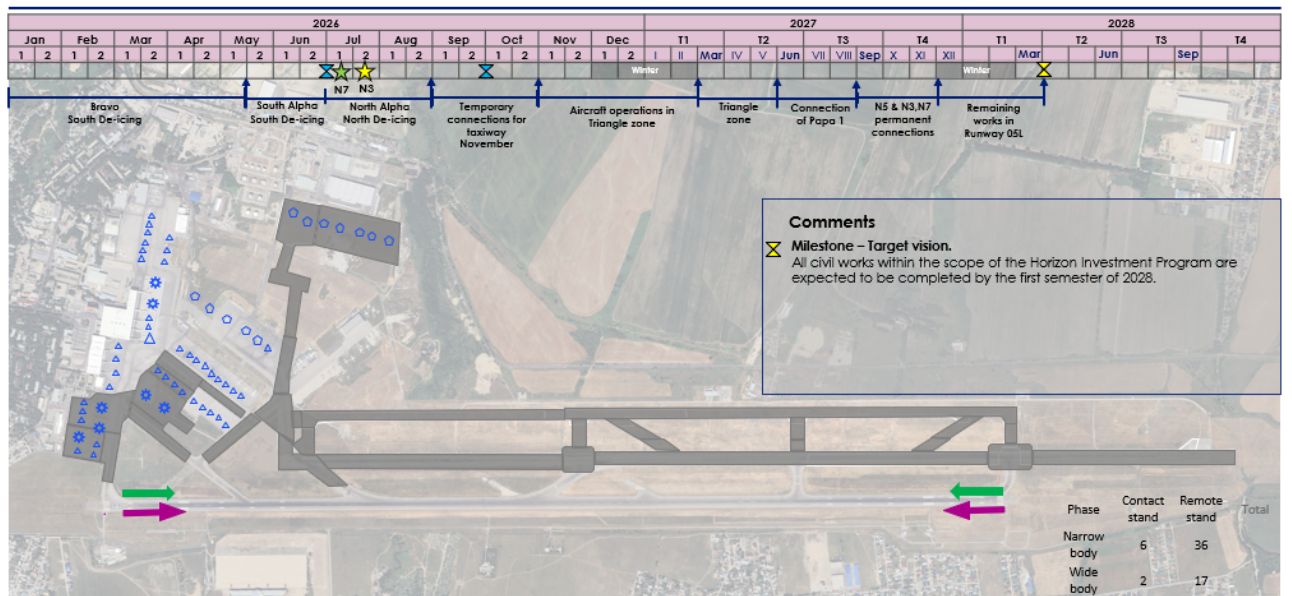
0.7



Legend :

- Current zone of intervention (civil works)
- Take-off Threshold
- Exit - Code E
- MARS-(E) Aircraft stand
- Stand with operational restrictions
- Code F Aircraft stand
- Code C Aircraft stand
- Closed stand
- Short and dynamic areas of civil works
- Landing Threshold
Rapid exit - Code C
Circulation - Code C
- Back-track - Code F
Towing - Code F
- Available area (after intervention)

0.8



Legend :

- Current zone of intervention (civil works)
- Take-off Threshold
- Exit - Code E
- MARS-(E) Aircraft stand
- Stand with operational restrictions
- Code F Aircraft stand
- Code C Aircraft stand
- Closed stand
- Short and dynamic areas of civil works
- Landing Threshold
Rapid exit - Code C
Circulation - Code C
- Back-track - Code F
Towing - Code F
- Available area (after intervention)

